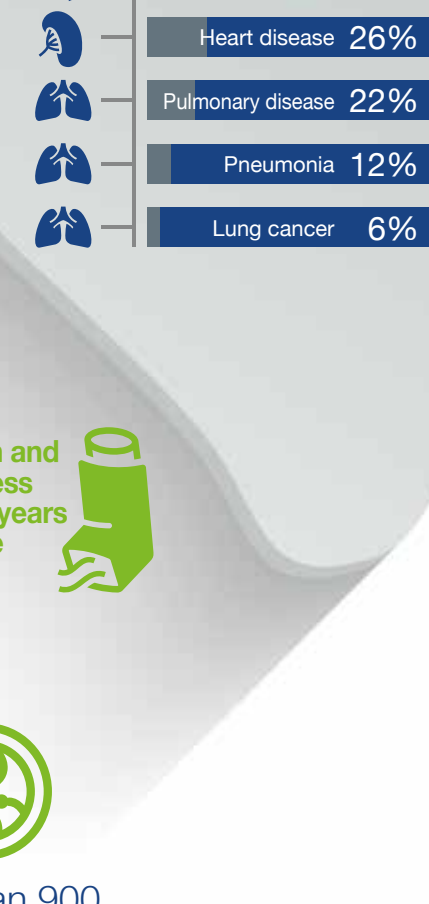
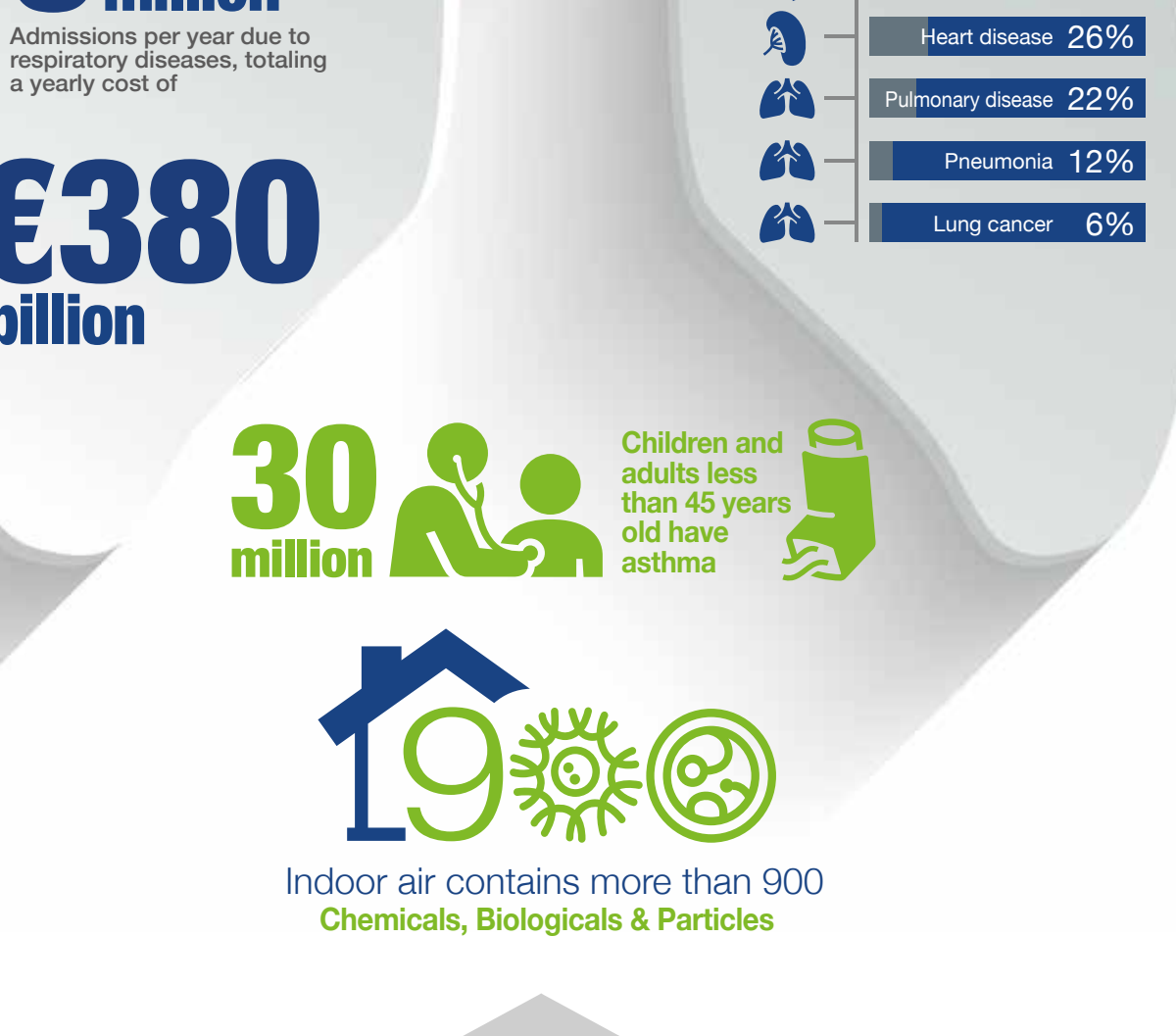


DON'T LET YOUR FLOORS PUT A CEILING ON YOUR HEALTH.

HOW FLOORING AFFECTS INDOOR AIR QUALITY (IAQ).



9/10 CAUSING **7 MILLION+** premature deaths yearly in EU
people in the world breathe polluted air



30 million Children and adults less than 45 years old have asthma

19 Indoor air contains more than 900 Chemicals, Biologicals & Particles

VOCs x1 Indoor Volatile Organic Compounds
Concentrations of VOCs up to ten times higher than outdoors

VOCs are organic chemicals that evaporate at low ambient room temperature are easily dispersed into the surrounding air. Other factors influencing IAQ are:

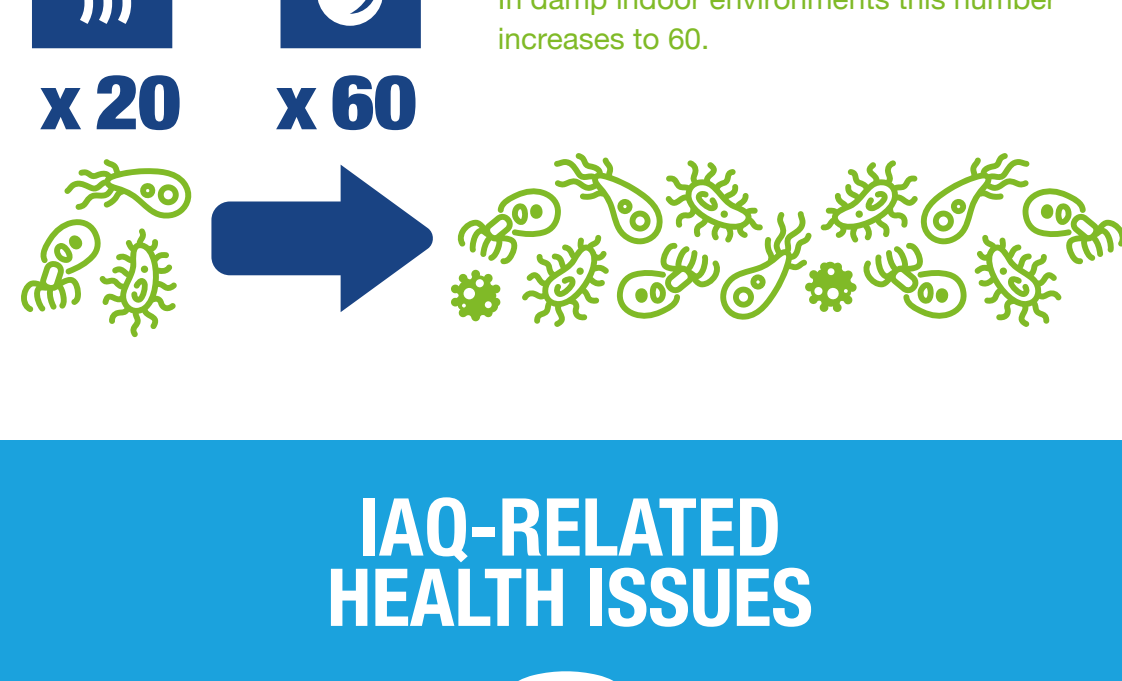
VENTILATION Important in heavily-insulated buildings

TEMPERATURE Good IAQ needs proper ambient temperature

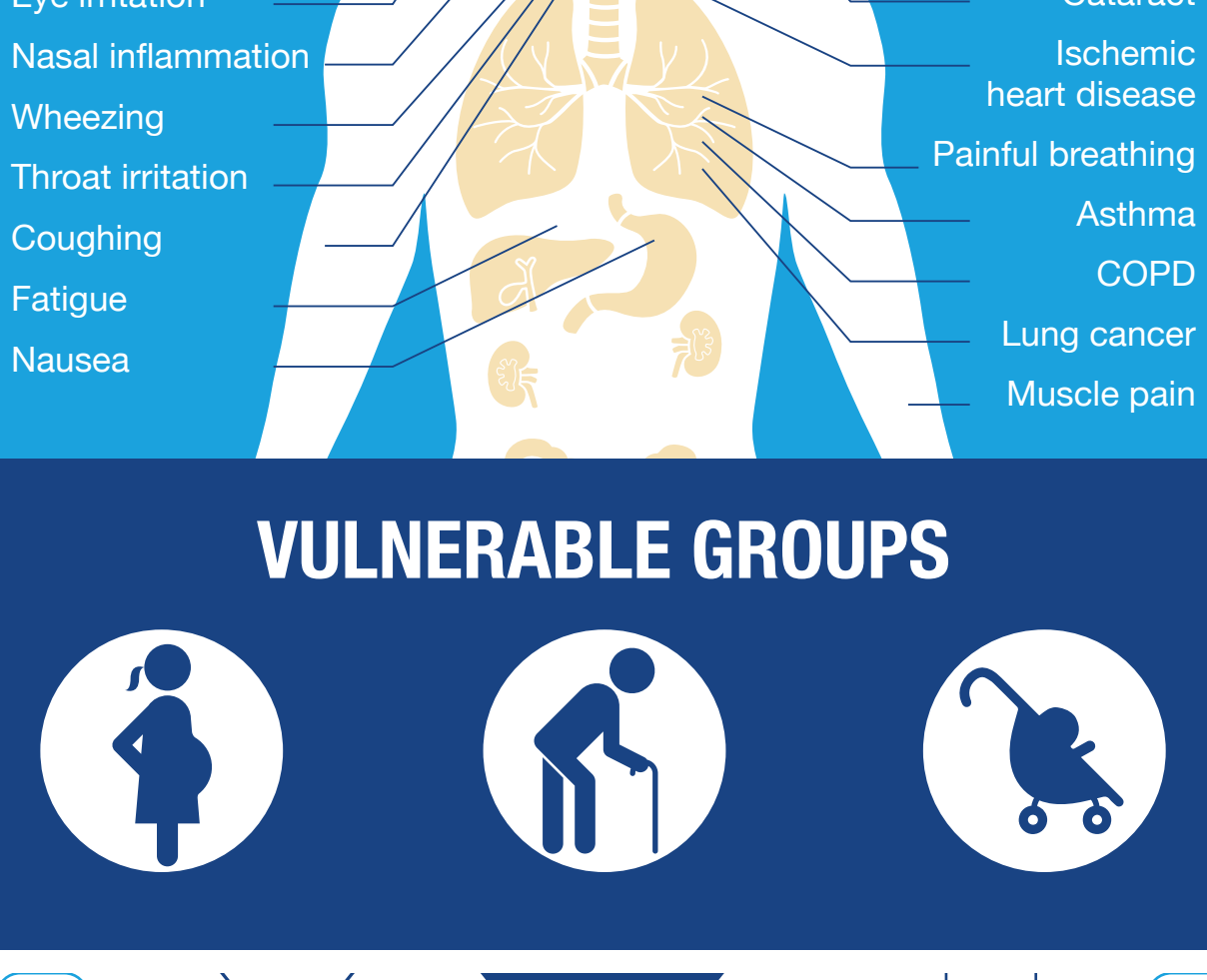
HUMIDITY Dampness leads to mold, increasing risk of asthma

80% of employees affected

SICK BUILDING SYNDROME



IAQ-RELATED HEALTH ISSUES



VULNERABLE GROUPS



ALWAYS CHOOSE LOW VOC OPTIONS

+ BENEFITS OF LOW VOCs

- | RESILIENT FLOORING | PSA PRESSURE SENSITIVE ADHESIVES |
|---|---|
| Extremely resistant to scratches, stains and scuffs | Improved ease and speed of installation |
| Clean surface reduces bacteria and pollutants | Improved performance with regards to moisture and temperature |
| Exceptional performance in high-traffic areas | Better bonding to substrates and underlayments |
| Easy cleaning & maintenance | Better tear- and moisture-resistance |

✓ GUIDELINES FOR LOW VOCs

- | WALLS & CEILING MATERIALS | WOOD FLOORING |
|--|--|
| Select formaldehyde- & asbestos-free options | Select formaldehyde-free wood products |
| Remove wet ceiling tiles immediately to avoid mold | |
| Ensure adequate ventilation during installation | |
| | PAINTS, COATINGS AND SEALANTS |
| | Choose products without lead, mercury, chromium or cadmium |
| | Perform painting off-site or during unoccupied periods |
| | Cover surfaces with sheeting while painting |
| | Wipe down all surfaces with a damp cloth afterwards |
| | Keep paint containers covered |

SUSTAINABLE SOLUTIONS

We believe in environmental sustainability, by developing durable, long-term flooring solutions, which can be installed in a user-friendly and fast way, whilst being compliant with indoor air quality guidelines.

- | EASY | FAST | SUSTAINABLE |
|---|--|--|
| Peel-and-stick installation | Time-and-cost efficient | Sustainable raw material usage |
| Making specific skills and tool sets redundant | No cure time required, reducing downtime | Reduced exposure to harmful substances |
| DIY-friendly | | Waste reduction for landfills |
| Permanent, removable and repositionable options | | |



ACCREDITATION

- Accreditation process to be renewed each year
- Supervision and control at all stages of manufacturing process
- Representative samples sent to independent auditing authorities
- Tests executed by independent laboratories
- Detailed record of entire quality control plan
- On-site audits by independent authorities

INDOOR AIR QUALITY GUIDELINES eurofins

Representative samples sent to independent auditing authorities
Tests executed by independent laboratories, within the context of Indoor Air Comfort Gold® label

- | COUNTRY-BOUND REGULATIONS: | LABELS: |
|----------------------------|--------------------------|
| French VOC | EMICODE® |
| French CMR | Indoor Air Comfort® |
| AgBB/ABG | Indoor Air Comfort Gold® |
| Belgian Regulation | Blue Angel |
| | BREEAM® |
| | LEED® |

AVOID ACCIDENTS

BY PROPER FLOORING CHOICES & FLOOR MAINTENANCE POLICIES



1st cause of **Work-related injuries** **3** Resulting in more than 3 days absence from work



WALKING-WORKING SURFACES AND PERSONAL PROTECTIVE EQUIPMENT RULE

PROTECTIVE SUITS LIMITING EXPOSURE

